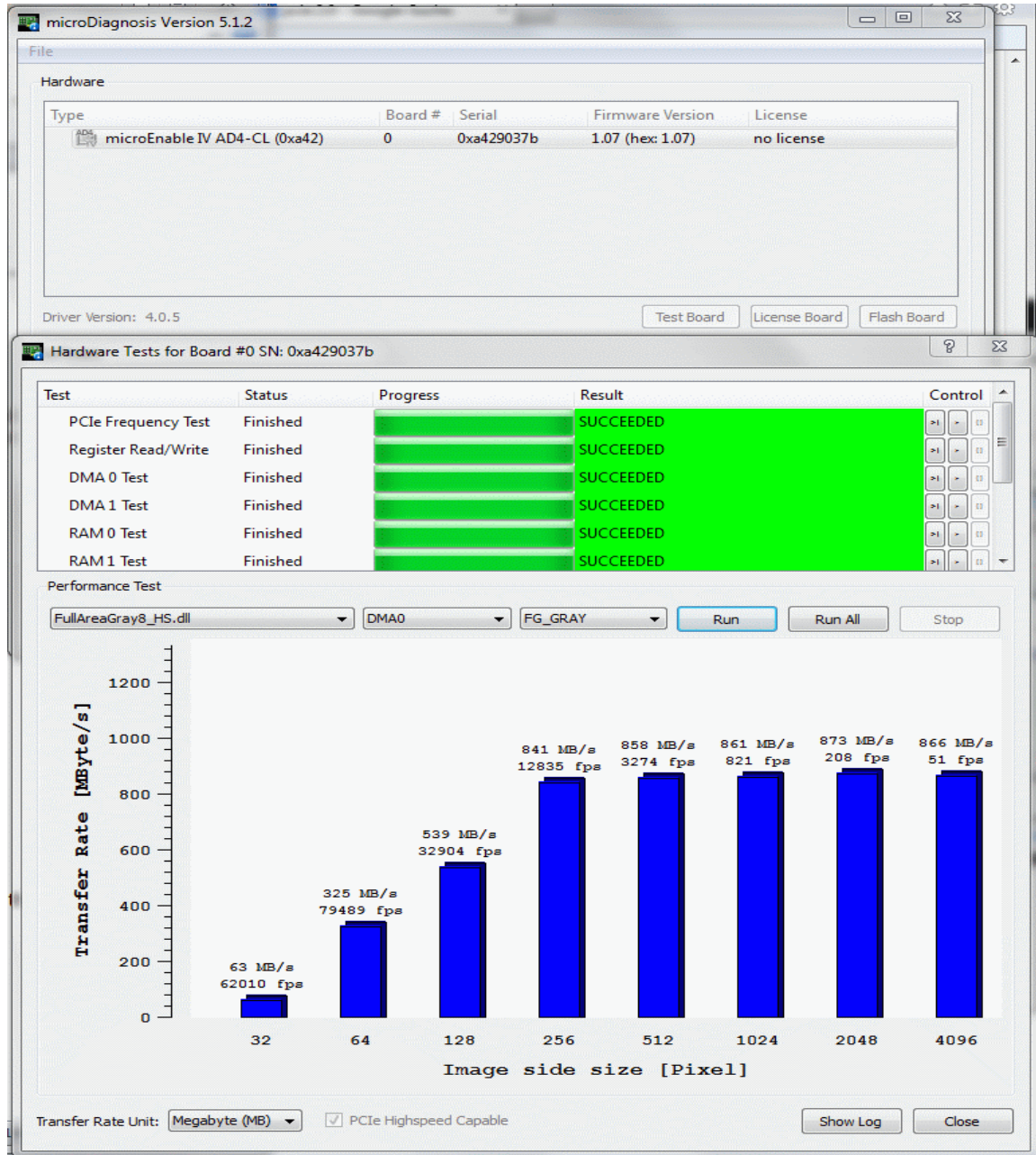


Performance Consideration MotionBLITZDirector2 KIT

1 PCIe Bus performance

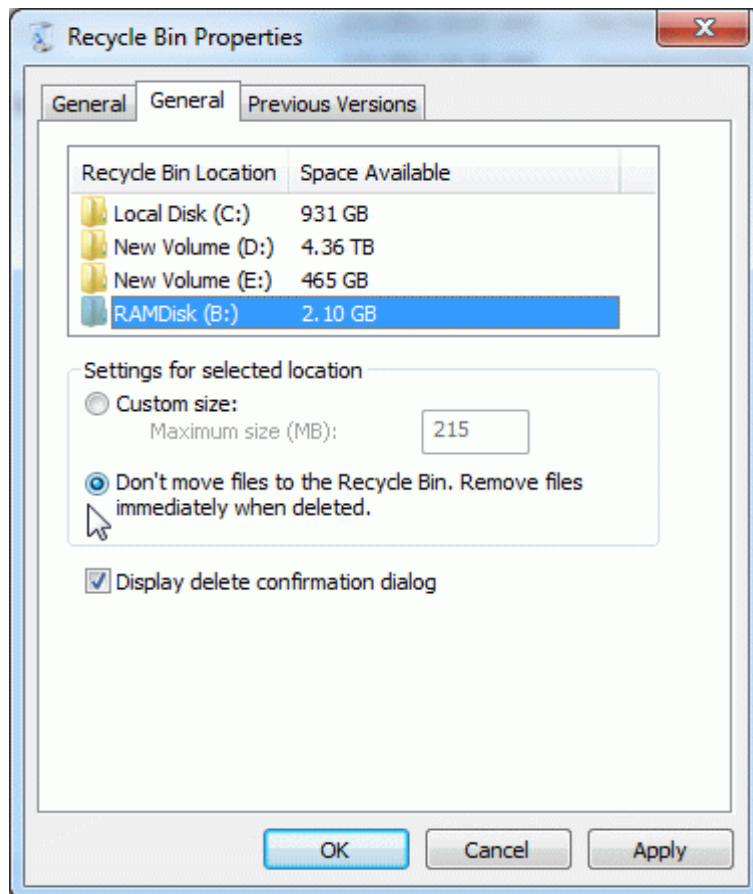
Your PC should support PCIe 2.0 or higher, 4 lanes. To check the available bandwidth, use the Silicon Software tool “microDiagnostics”. At least 800 Megabyte per second should be reached with image size 512:



2 Windows Performance

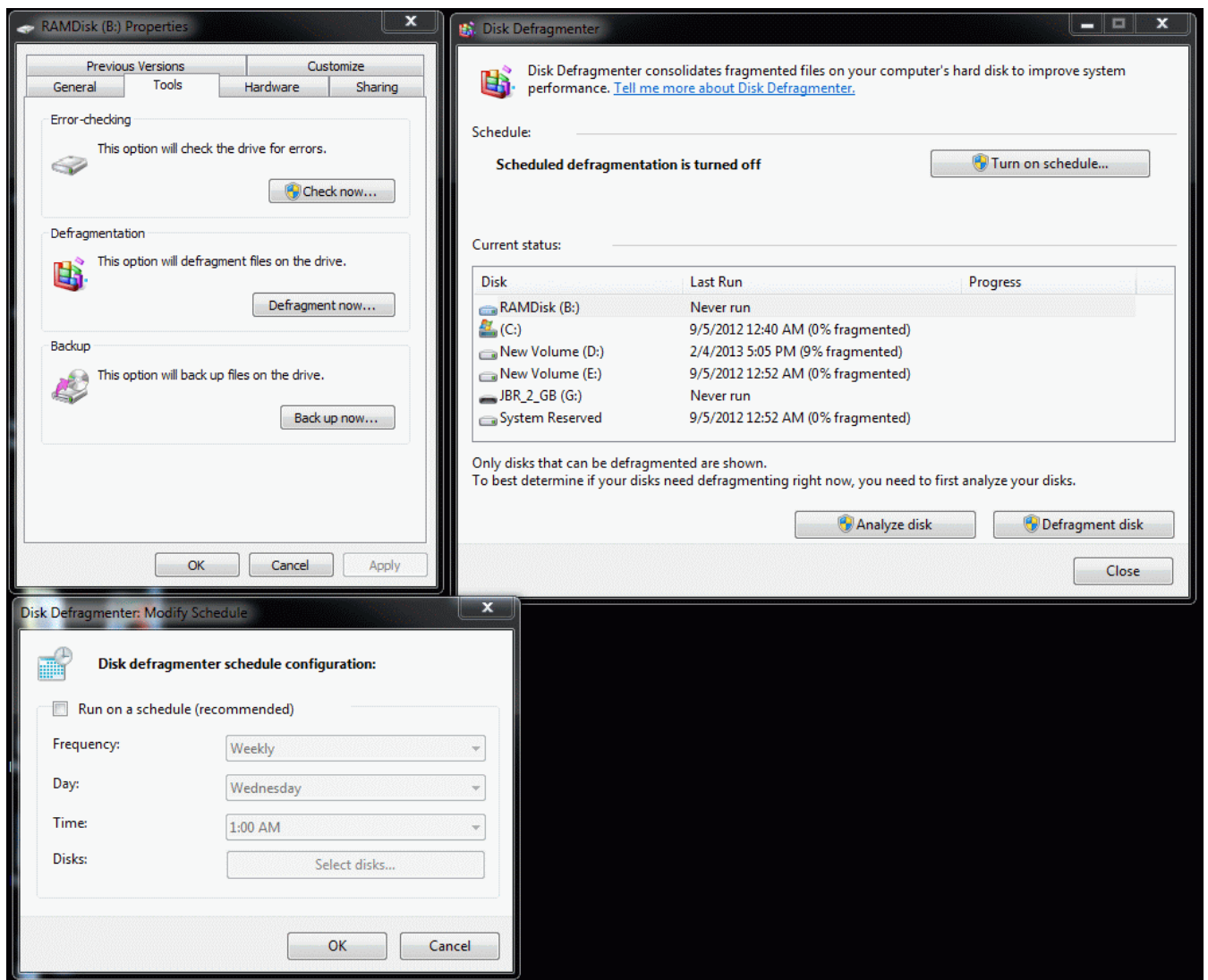
During a recording session, the KIT software should not be interrupted too long by Windows or other programs. If the KIT software won't get the necessary computing time for acquiring the camera's frames and storing them on the RAMDisk, please configure your system:

- Recycle Bin Properties: Don't move files to the Recycle Bin

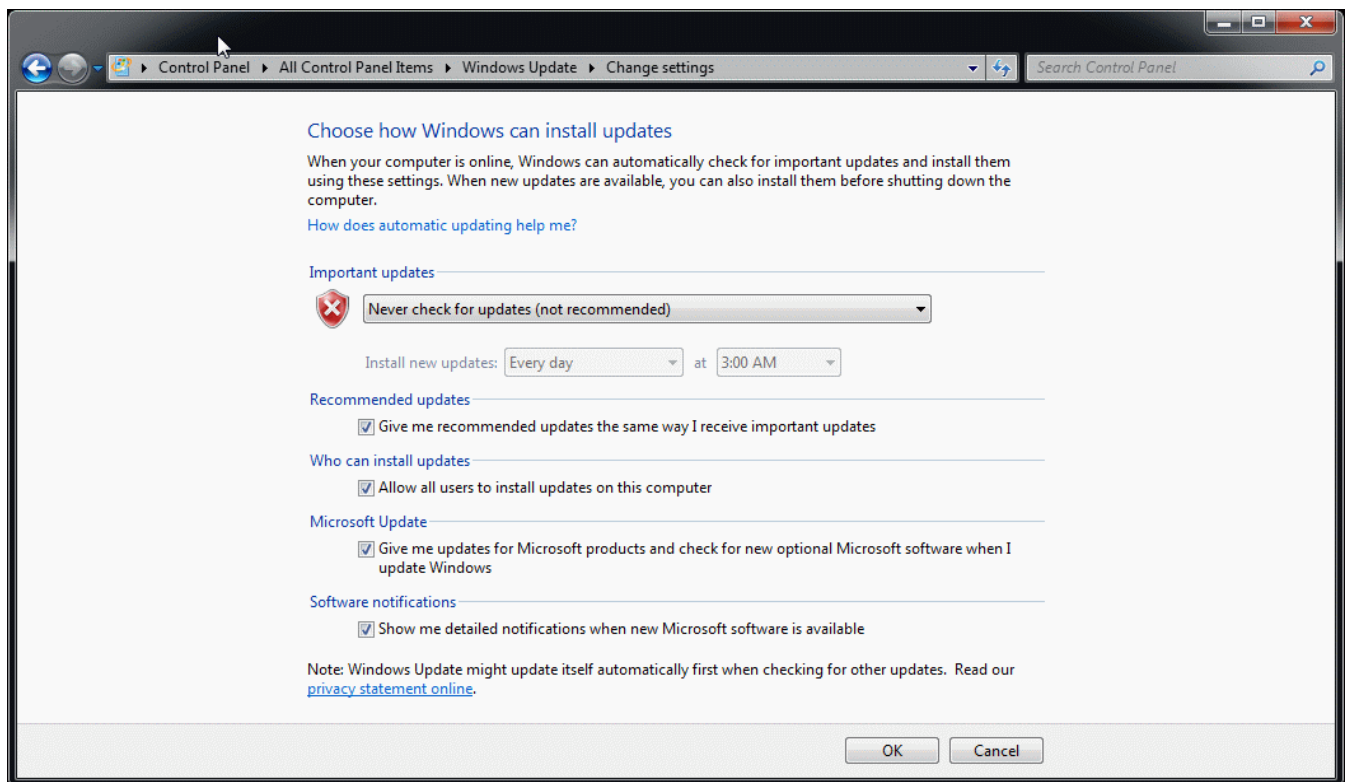


- Control Panel > All Control Panel Items > System > System Protection: turn off system protection

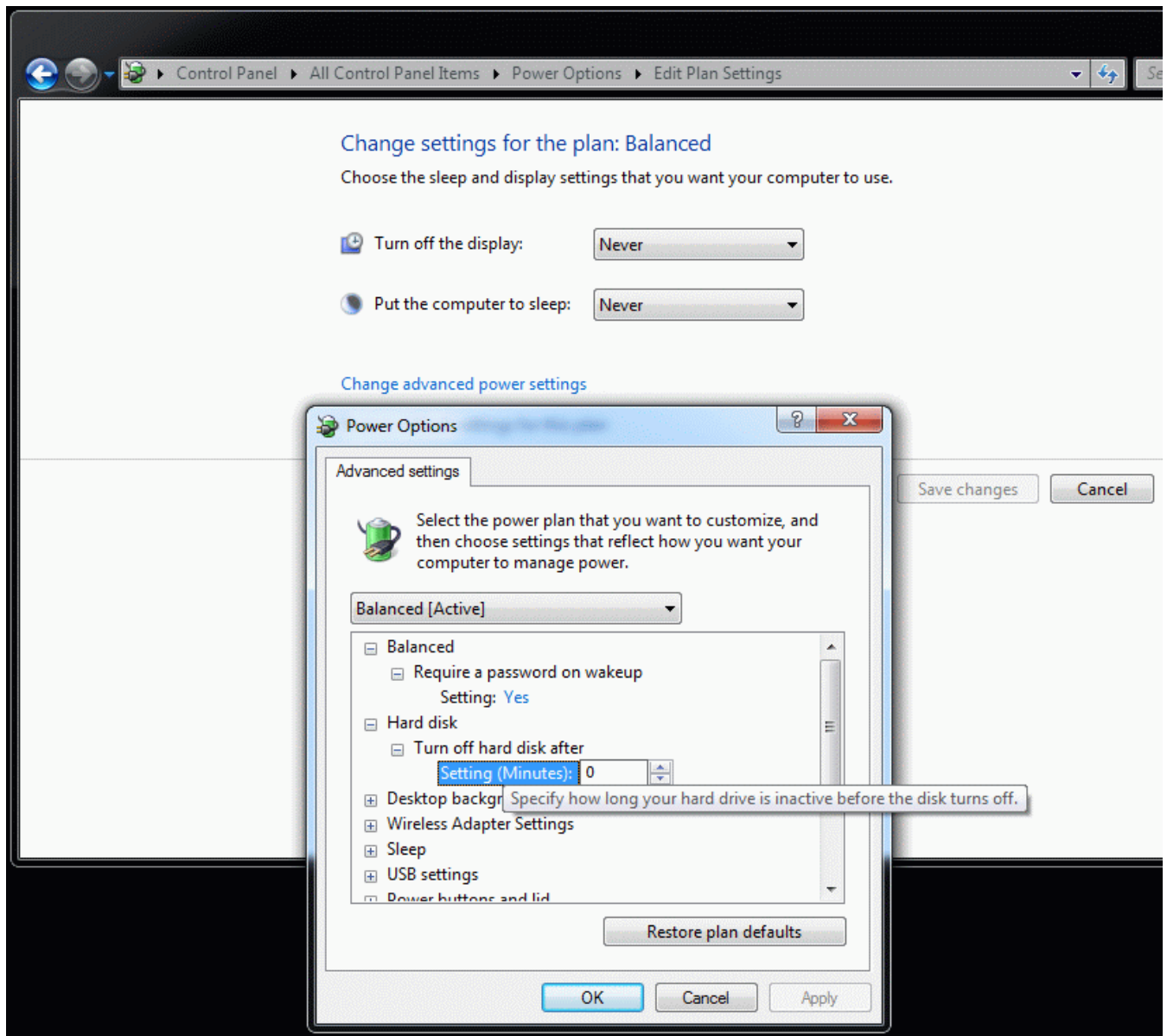
- Control Panel > All Control Panel Items > Action Center > Change Action Center settings:
 deselect the following items:
 - ➔ Windows Update
 - ➔ Spyware and related protection
 - ➔ Network firewall
 - ➔ Virus protection
 - ➔ Windows Backup
 - ➔ Check for updates
- RAMDisk Properties > Tools > Defragment now... > Turn on schedule... > deactivate



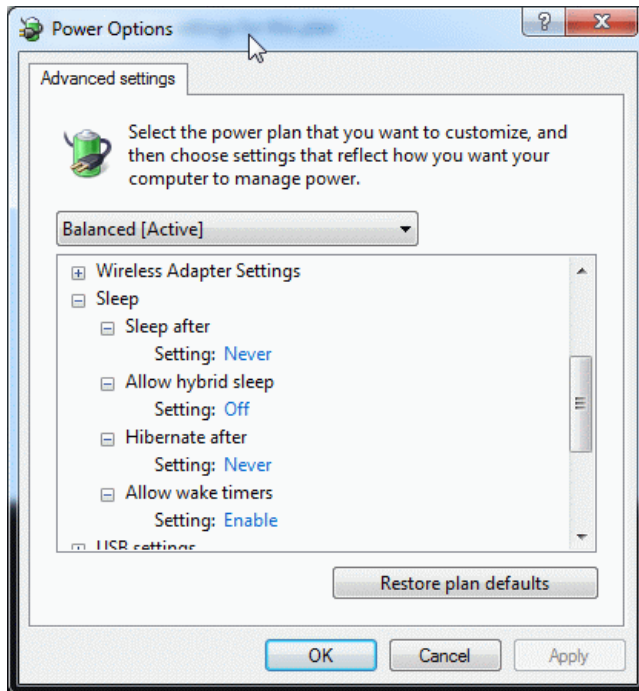
- Control Panel > All Control Panel Items > Windows Update > Change settings:
Never check for updates



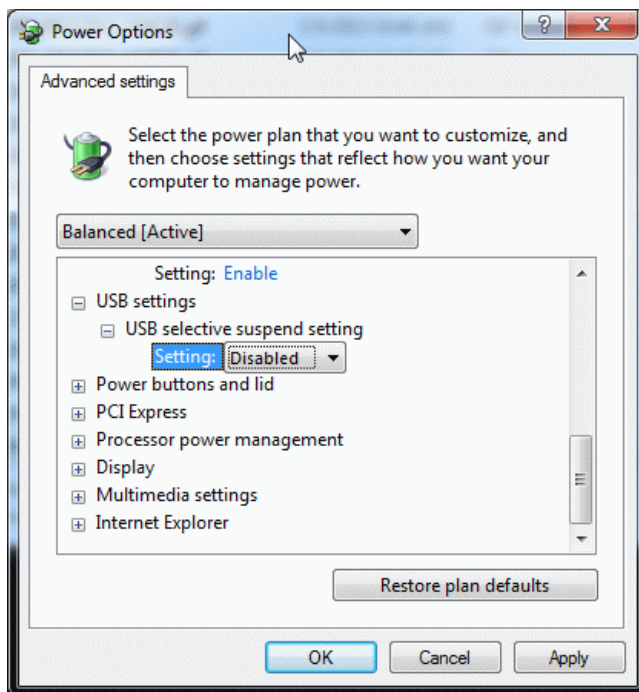
- Control Panel > All Control Panel Items > Power Options > Edit Plan Settings:
deactivate: Turn off hard disk



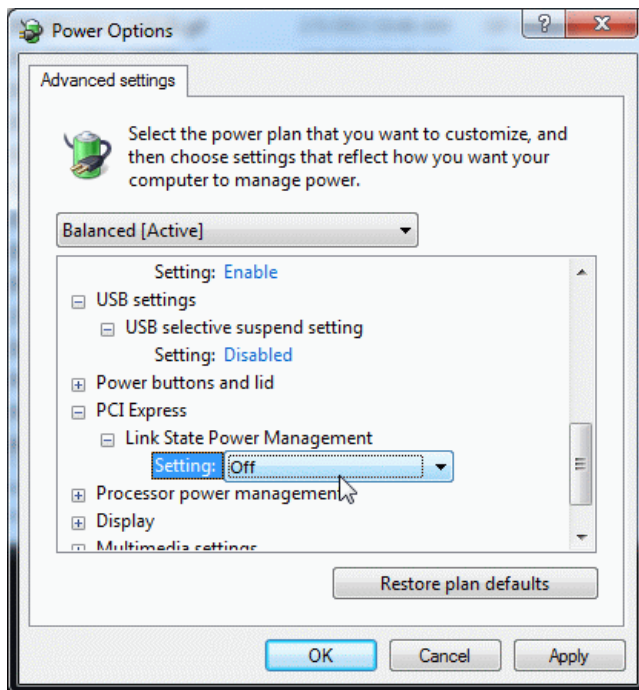
- Control Panel > All Control Panel Items > Power Options > Edit Plan Settings:
deactivate: Sleep



- Control Panel > All Control Panel Items > Power Options > Edit Plan Settings:
deactivate: USB selective suspend setting



- Control Panel > All Control Panel Items > Power Options > Edit Plan Settings:
deactivate: PCI Express Link State Power Management setting



- Control Panel > All Control Panel Items > Power Options > Edit Plan Settings:
deactivate: Display Turn off display after Minutes

